

Town of Little Elm

Solid Waste

Bulk & Brush

Recycling

Courtesy Drop Site

Utility Billing

"The Town with a Lake Attitude"





contents

Residential Trash & Recycling Route Map

Residential Trash & Recycling Guidelines

Solid Waste & Little Elm Ordinance

2023 Bulk Trash & Brush Calendar

Bulk Trash & Brush Guidelines

2023 Solid Waste Holiday Schedule

Clean & Green Collection Events

Year-round Specialty Recycling

Little Elm Residential Courtesy Drop Site

Responsible Water Use: Water Conservation Tips

Utility Billing: Water & Solid Waste Payments

Public Works Contact Information

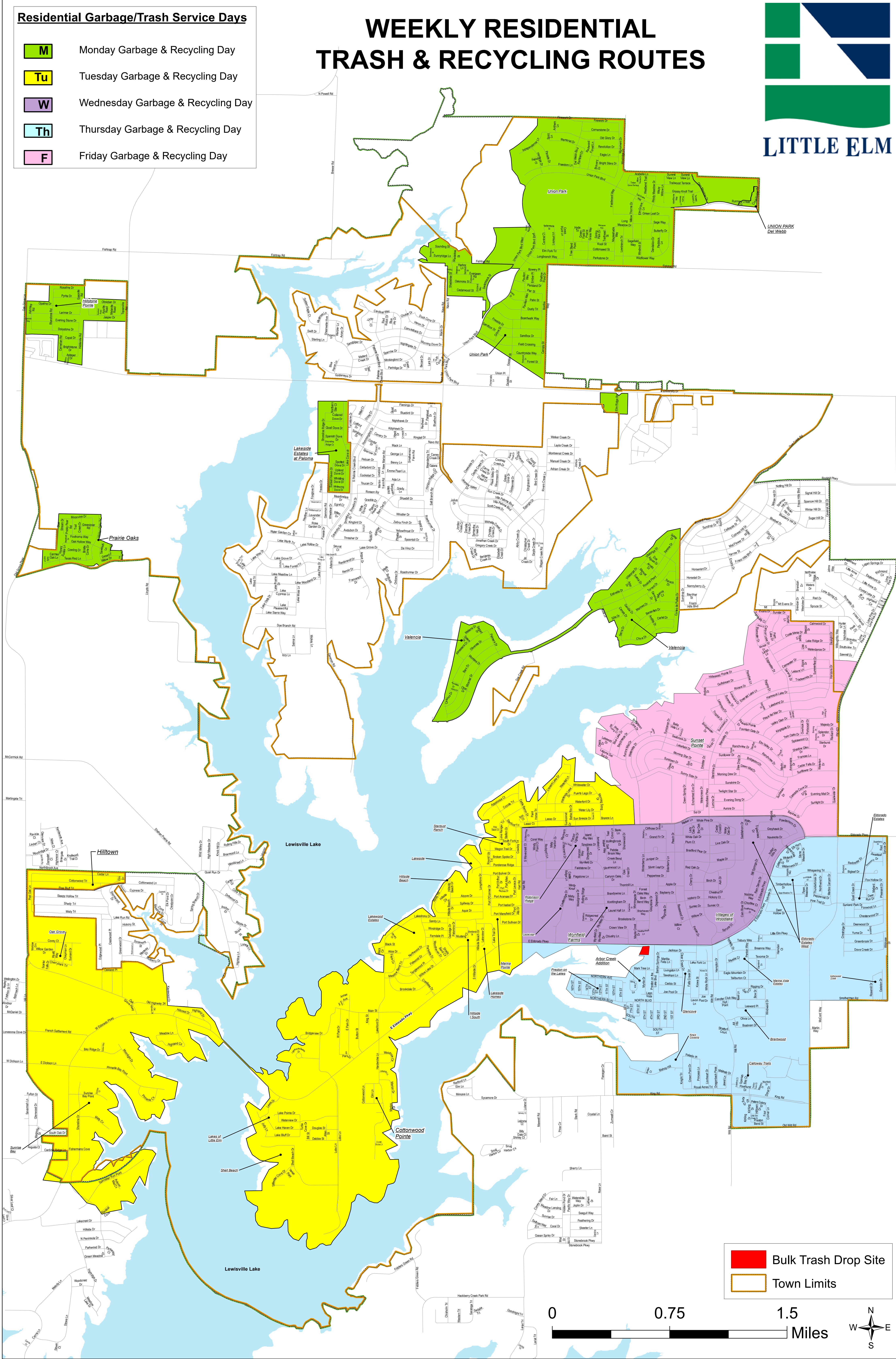
Residential Garbage/Trash Service Days

- M Monday Garbage & Recycling Day
- Tu Tuesday Garbage & Recycling Day
- W Wednesday Garbage & Recycling Day
- Th Thursday Garbage & Recycling Day
- F Friday Garbage & Recycling Day

WEEKLY RESIDENTIAL TRASH & RECYCLING ROUTES



LITTLE ELM



Residential Trash & Recycling Guidelines

The Town of Little Elm contracts solid waste and recycling services out to *Community Waste Disposal (CWD)*.

Little Elm residents receive ONE 95-gallon **gray trash** cart and ONE 95-gallon **blue recycling** cart. Extra carts are available for an added monthly fee through Utility Billing. The **gray trash** cart is for solid waste only. The **blue recycling** cart is for recycling materials only.

Since CWD uses the single stream recycling method, residents may place all recyclable items inside the same recycling cart.

RECYCLING GUIDELINES FOR ITEMS PLACED IN BLUE RECYCLING CART

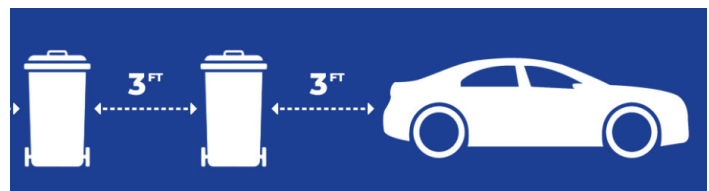


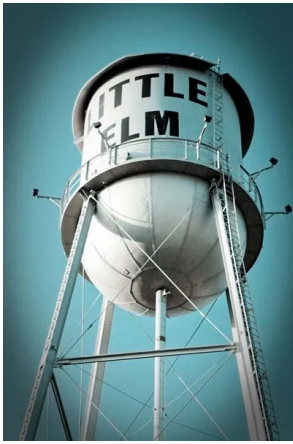
Little Elm residents receive trash and recycling service on a weekly basis. You can figure out your weekly trash day using the Trash & Recycling Map on the previous page.

On your service day, all trash and recycling must be placed inside the respective carts.

Trash or recycling carts that are overloaded, positioned too close together, or blocked by cars will not be serviced.

Position carts with the wheels towards the residence and separated from each other by at least three feet.





Solid Waste & Little Elm Ordinance

Your trash and recycling containers shall be placed at the curb no earlier than 7 p.m. on the day prior to the scheduled collection day.

To ensure collection; trash and recycling containers must be placed at the curb no later than 7 a.m. on the day of collection.

At all other times, residents are required to place trash and recycling carts behind the front building line of their home.

Trash and recycling carts and any other unacceptable waste or recyclables, shall be removed from the curb or other designated point by the resident no later than 7 a.m. on the day following their scheduled collection day.

Your homeowners association (HOA) may have more stringent requirements for trash and recycling cart storage. Please check your HOA governing documents for details.



TOP FIVE REASONS SOLID WASTE AND RECYCLING PICKUP SERVICES CAN BE UNSUCCESSFUL:

1. Cart was placed **too close to mailbox**
2. Vehicle was **blocking access to cart**
3. Cart was **put out after 7 a.m.**
4. Cart lid was unable to be closed and **overflowing**
5. Carts were placed **too close together**

For missed trash pickup, please call Utility Billing at 214-975-0480



Solid Waste & Utility Billing Customer Service is available

Monday - Thursday from 7:30 a.m. - 5:30 p.m.

Friday from 7:30 a.m. - 11:30 a.m.

Email: UtilityBilling@littleelm.org or call: 214-975-0480.

LITTLE ELM 2023 BULK & BRUSH COLLECTION SCHEDULE

DAYS SHADED IN PINK ARE NOT BULK or BRUSH SERVICE DAYS

JANUARY						
S	M	T	W	TH	F	S
1	2	3	4	5	6	7
8	9	10	11	12	13	14
15	16	17	18	19	20	21
22	23	24	25	26	27	28
29	30	31				

FEBRUARY						
S	M	T	W	TH	F	S
			1	2	3	4
5	6	7	8	9	10	11
12	13	14	15	16	17	18
19	20	21	22	23	24	25
26	27	28				

MARCH						
S	M	T	W	TH	F	S
			1	2	3	4
5	6	7	8	9	10	11
12	13	14	15	16	17	18
19	20	21	22	23	24	25
26	27	28	29	30	31	

APRIL						
S	M	T	W	TH	F	S
						1
2	3	4	5	6	7	8
9	10	11	12	13	14	15
16	17	18	19	20	21	22
23 30	24	25	26	27	28	29

MAY						
S	M	T	W	TH	F	S
	1	2	3	4	5	6
7	8	9	10	11	12	13
14	15	16	17	18	19	20
21	22	23	24	25	26	27
28	29	30	31			

JUNE						
S	M	T	W	TH	F	S
				1	2	3
4	5	6	7	8	9	10
11	12	13	14	15	16	17
18	19	20	21	22	23	24
25	26	27	28	29	30	

JULY						
S	M	T	W	TH	F	S
						1
2	3	4	5	6	7	8
9	10	11	12	13	14	15
16	17	18	19	20	21	22
23 30	24 31	25	26	27	28	29

AUGUST						
S	M	T	W	TH	F	S
		1	2	3	4	5
6	7	8	9	10	11	12
13	14	15	16	17	18	19
20	21	22	23	24	25	26
27	28	29	30	31		

SEPTEMBER						
S	M	T	W	TH	F	S
					1	2
3	4	5	6	7	8	9
10	11	12	13	14	15	16
17	18	19	20	21	22	23
24	25	26	27	28	29	30

OCTOBER						
S	M	T	W	TH	F	S
1	2	3	4	5	6	7
8	9	10	11	12	13	14
15	16	17	18	19	20	21
22	23	24	25	26	27	28
29	30	31				

NOVEMBER						
S	M	T	W	TH	F	S
			1	2	3	4
5	6	7	8	9	10	11
12	13	14	15	16	17	18
19	20	21	22	23	24	25
26	27	28	29	30		

DECEMBER						
S	M	T	W	TH	F	S
					1	2
3	4	5	6	7	8	9
10	11	12	13	14	15	16
17	18	19	20	21	22	23
24 31	25	26	27	28	29	30

PLEASE ENSURE BULK AND BRUSH ITEMS AT CURB NO LATER THAN 7 A.M. ON MONDAY



OBSERVED HOLIDAY

BULK & BRUSH SCHEDULE (RESIDENTIAL)

Trash & Recycling Service Day

=	M	=
=	TU	=

Bulk & Brush pick up begins the 1st & 3rd Monday beginning with the 1st full week of each month (shaded in blue.)

Trash & Recycling Service Day

=	W	=
=	TH	=
=	F	=

Bulk & Brush pick up begins on the 2nd & 4th Monday beginning with the 2nd full week of the month (shaded in gray.)

QUESTIONS OR CONCERNS?

CONTACT CWD

CUSTOMERSERVICE@CWD.TO

972.392.9300/OPTION 2



Bulk Trash & Brush Guidelines:

Acceptable Bulk Trash & Brush Items

- Mattresses and box springs
- Kitchen Appliances (ex. dishwasher, stove, coffee maker, microwave oven, and toaster)
- Washing machines and dryers
- Water heaters (drained)
- Refrigerators/freezers (refrigerant must be removed by a professional and have a label indicating the removal on the appliance)
- Cardboard boxes (broken down, bundled, and tied)
- Carpet bundled in 4 foot lengths
- Tree limbs (need to be 4 ft. by 2 ft. bundled & tied)
- Brush (grass and leaves bagged)
- Fence panels no bigger than 4 ft. by 6 ft.
- Toys and yard tools that are labeled "trash"

Not Acceptable Bulk Trash & Brush Items

- Household Hazardous Waste (ex. paint, motor oil, pool chemicals, fuel, poisons, fertilizers, pesticides, herbicides, fluorescent lamps and bulbs, lamp ballasts, smoke detectors, medical waste, and certain cleaning chemicals)
- Commercial/residential construction and remodeling debris (please call CWD at 972-392-9300; option 2, for an estimate)
- Tires
- Batteries
- Miscellaneous automotive parts
- Loose debris (debris must be placed in a box or container no larger than 2 ft. x 2 ft. x 4 ft.) and weigh no more than 50 lbs.

When is my Bulk Trash & Brush week?

Residents with a **Monday or Tuesday trash pickup day** will have their Bulk Trash & Brush service on the first and third Monday of the month (beginning with the first full week of each month).

Residents with a **Wednesday, Thursday, or Friday trash pickup day** will have their Bulk Trash & Brush service on the second and fourth Monday of each month (beginning with the second full week of each month).

Please review the legend and full calendar for details.

When do I put my Bulk Trash & Brush out for pickup?

Bulk Trash & Brush **MUST** be placed curbside by **Monday at 7 a.m.** on your bulk collection week and will be collected by Wednesday evening of that week.

Note that on a rare occasion, due to weather or street construction conditions, bulk trash pickup may extend to Thursday.

If you miss your scheduled Bulk Trash & Brush week, the Town provides a Courtesy Drop Site for its residents located at 1600 Brenda Lane. Please provide a current utility bill and photo identification. Hours of operation are: Friday 4 p.m. to 8 p.m. Saturday and Sunday 8 a.m. to 5 p.m. or until full.



Town of Little Elm Solid Waste Holiday Schedule 2023

**** RESIDENTIAL SERVICES SCHEDULE ONLY ****

New Year's Day – Sunday, January 1

Monday 1/2 – Regular Collection
Tuesday 1/3 – Regular Collection
Wednesday 1/4 – Regular Collection
Thursday 1/5 – Regular Collection
Friday 1/6 – Regular Collection
****No Disruption of Services****

MLK, Jr. Day – Monday, January 16

Monday 1/16 – Regular Collection
Tuesday 1/17 – Regular Collection
Wednesday 1/18 – Regular Collection
Thursday 1/19 – Regular Collection
Friday 1/20 – Regular Collection
****No Disruption of Services****

Good Friday – Friday, April 7

Monday 4/3 – Regular Collection
Tuesday 4/4 – Regular Collection
Wednesday 4/5 – Regular Collection
Thursday 4/6 – Regular Collection
Friday 4/7 – Regular Collection
****No Disruption of Services****

Memorial Day – Monday, May 29

Monday 5/29 – Regular Collection
Tuesday 5/30 – Regular Collection
Wednesday 5/31 – Regular Collection
Thursday 6/1 – Regular Collection
Friday 6/2 – Regular Collection
****No Disruption of Services****

Independence Day – Tuesday, July 4

Monday 7/3 – Regular Collection
Tuesday 7/4 – ***NO COLLECTION***
Wednesday 7/5 – ***Tuesday's*** Trash/Recycling
Thursday 7/6 – ***Wednesday's*** Trash/Recycling
Friday 7/7 – ***Thursday's*** Trash/Recycling
Saturday 7/8 – ***Friday's*** Trash/Recycling

Labor Day – Monday, September 4

Monday 9/4 – Regular Collection
Tuesday 9/5 – Regular Collection
Wednesday 9/6 – Regular Collection
Thursday 9/7 – Regular Collection
Friday 9/8 – Regular Collection
****No Disruption of Services****

Thanksgiving – Thursday, November 23

Monday 11/20 – Regular Collection
Tuesday 11/21 – Regular Collection
Wednesday 11/22 – Regular Collection
Thursday 11/23 – ***NO COLLECTION***
Friday 11/24 – ***Thursday's*** Trash/Recycling
Saturday 11/25 – ***Friday's*** Trash/Recycling

Christmas – Monday, December 25

Monday 12/25 – ***NO COLLECTION***
Tuesday 12/26 – ***Monday's*** Trash/Recycling
Wednesday 12/27 – ***Tuesday's*** Trash/Recycling
Thursday 12/28 – ***Wednesday's*** Trash/Recycling
Friday 12/29 – ***Thursday's*** Trash/Recycling
Saturday 12/30 – ***Friday's*** Trash/Recycling



CommunityWasteDisposal.com
Since 1984

Customer Service: 972.392.9300/Option 2



Saturday, April 1, 2023
Public Works Service Center
1600 Mark Tree Lane



Since 2011, the Town of Little Elm has teamed up with Keep Little Elm Beautiful, Community Waste Disposal (CWD), and CoServ Electric to deliver essential services to residents.

The Clean & Green Bi-Annual Waste Collection & Recycling Event occurs twice a year at the Public Works Service Center.

These special events are FREE for Little Elm residents and provide an opportunity to responsibly dispose of household trash items that are not accepted for regular or bulk trash pickup.

This is the perfect time to purge your homes, sheds, and garages of unwanted/unused paints, pesticides, tires, engine oil, automotive batteries, electronics, and more!

Accepted Items & Services:

Refrigerators and Freezers (CWD will remove the refrigerant for you)

HHW - ex. paint, motor oil/auto fluids, pool chemicals, household cleaning chemicals, fluorescent lamps and bulbs, automotive batteries, pesticides, cooking oil/grease

Kitchen Appliances

Washers and Dryers

E-waste/Electronics - ex. televisions, computers, laptops, monitors, printers, video game consoles

Tire Recycling



Shred Event - TBD
Hosted by Keep Little Elm Beautiful
KLEB75068@GMAIL.COM

Year-round Specialty Recycling

Permanent Medicine Take-Back Drop
Boxes are available at

CVS Pharmacy
2591 FM 423

ER of Texas
2800 Little Elm Parkway

Accepted Medications:

- Unused/Expired Prescription Medications
- Over-the-Counter Medications
- Vitamin and Herbal Supplements
- Pet Medications



Medications Not Accepted:

- Needles
- Sharps/Syringes
- Inhalers
- Aerosol Cans
- Liquids



Metal Recycling



The Town of Little Elm supports our local non-profit organization, Keep Little Elm Beautiful (KLEB).

KLEB is a Keep Texas Beautiful affiliate that promotes local beautification, education and litter reduction.

All metal recycling brought to the Town's Courtesy Drop Site provides additional funding for cleanup events and community support.



R2S provides drop-off recycling services with locations in Little Elm, Frisco, Flower Mound, and Lewisville.

R2S Little Elm is located at 2417 FM 423 (between Bigleaf Dr. and Sunland Park Dr.)

Ph: 972-619-7880

Donations benefit local charities such as the Little Elm Area Food Bank.

You can get more information at R2SDFW.com.

Courtesy Drop Site



LITTLE ELM WATER & SOLID WASTE UTILITY CUSTOMERS

ACCEPTED ITEMS**:

- Metal
- Brush and tree limbs
- Cooking oils (sealed tightly with a screw top lid)
- Cardboard and general waste
- Furniture, mattresses, and box springs



*****Please note that there is no staff to assist with loading and unloading of any solid waste or brush/tree trimmings.***

This site is not a landfill and has very limited space; therefore we must insure all items are residential waste or recycling.

We cannot accept contractor debris such as an entire wood fence that has been replaced, roofing shingles, or bricks. Contractor should be disposing of these items as part of their cost for the project.

All unacceptable items will be collected at the Clean and Green Bi-Annual Waste Collection events that occur twice a year at the Public Works Service Center.

The Courtesy Drop Site is located at **1600 Brenda Lane**. It is open to Little Elm residents with an active water or trash account. There is no fee to use the drop site. Please bring your most recent utility bill and your photo ID with your matching Little Elm address.

Hours of Operation

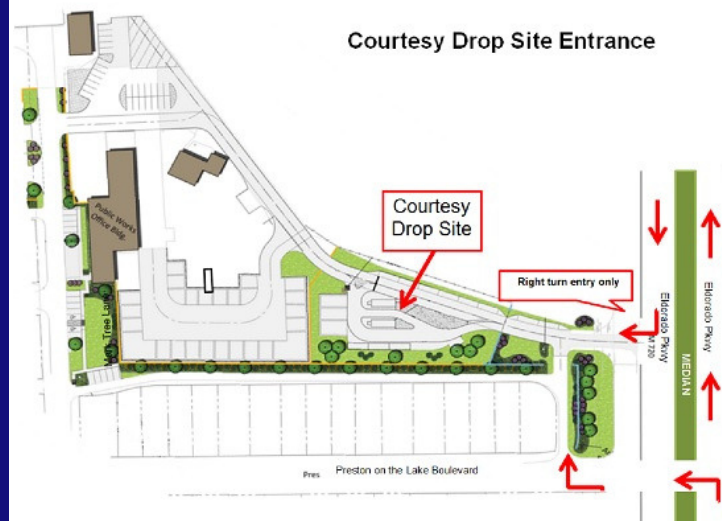
Fridays 4 - 8 p.m.

Saturdays 8 a.m. - 5 p.m.

Sundays 8 a.m. - 5 p.m.

(or until full)

Drop Site will be closed on some holidays.



Recycle your
"clean"
(no tinsel or lights)
Christmas tree,
too!



RESPONSIBLE WATER USE:

Water Conservation Tips

- Check bathroom and kitchen faucets, pipes and toilets for leaks.
- Turn off kitchen faucet while scrubbing pots and dishes.
- Install water saving shower heads and take shorter showers.
- Turn off the running water while soaping hands and brushing teeth.
- Use your dishwasher and washing machine only when fully loaded.
- Use a broom, not a hose, to clean driveways and walkways.
- Place mulch around plants to hold water in the soil.
- Water your yard and outdoor plants early or late in the day to reduce evaporation.
- Reduce water runoff by planting native plants in gardens.



IRRIGATION: CHECK YOUR SPRINKLER SETTINGS

ADJUST YOUR IRRIGATION CONTROLLER TO MEET THE NEEDS OF YOUR LAWN AND THE CHANGING SEASONS

Advice Amount	Programming Examples for Pop-up Sprinkler Heads
0"	No watering is necessary. Turn your sprinkler system to the OFF position.
0.25"	Set your controller to water each zone for no more than 6 minutes for 2 consecutive watering cycles on your Trash/Recycle Pick-up day.
0.50"	Set your controller to water each zone for no more than 6 minutes for 4 consecutive watering cycles on your Trash/Recycle Pick-up day.
0.75"	Use a combination of the above two programming schedules.
1"	Use the 0.50" example twice. Schedule one 0.50" program for the morning, and the other during the late evening hours.

*Due to the low water-infiltration rate of our soil, any water applied after roughly 6 minutes becomes run-off.

- In hot, dry weather, water shrubs and flowers daily.
- Morning, around 2 - 8a.m., is the best time to water.
- The rule of thumb for lawns is to water one-inch deep each time you water.
- It's better for the lawn to water heavily and less frequently, than to lightly mist it every day.
- Pay attention to high-sun areas of the lawn.
- Don't forget that even mature trees need water too.

CONSERVATION STAGE

SEASONAL RESIDENTIAL WATERING SCHEDULE

Trash & Recycling Day =	Landscape Watering Day
MONDAY	Monday
TUESDAY	Tuesday
WEDNESDAY	Wednesday
THURSDAY	Thursday
FRIDAY	Friday

One Day a Week
Effective November 1 - March 31

Visit LittleElm.org to view the Seasonal & Weather related Watering Guidelines




CONSERVATION STAGE

SEASONAL RESIDENTIAL WATERING SCHEDULE

Trash & Recycling Day =	Landscape Watering Days
MONDAY	Monday & Thursday
TUESDAY	Tuesday & Friday
WEDNESDAY	Wednesday & Saturday
THURSDAY	Thursday & Monday
FRIDAY	Friday & Tuesday

Twice a Week
Effective April 1 - October 31

Visit LittleElm.org to view the Seasonal & Weather related Watering Guidelines



Current water conservation stage information can be found online here:
<https://www.littleelm.org/809/Water-Conservation-Guidelines>

Utility Billing: Water & Solid Waste

Utility Billing Office
100 W Eldorado Parkway
Second Floor (above Library)
Little Elm, Texas 75068

Hours of Operation:
Monday - Thursday 7:30 a.m. - 5:30 p.m.
Fridays 7:30 a.m. - 11:30 a.m.
Phone: 214-975-0480
Email: UtilityBilling@littleelm.org

Welcome to the Little Elm Utility Billing Office. All residents will be billed for water, sewer, and solid waste monthly. There are two ways to set up service: by visiting our office in person or applying for service over the phone both of which require the documentation listed below.

To set up water service, please submit the following to the Utility Billing Office:
Government-issued identification for all parties to be included on the water account.
Proof of ownership (copy of HUD statement of closing) or lease agreement.

Contact information.
Date service should be initiated.

After submitting the required documentation to the Utility Billing Office, please call 214-975-0480 to complete the application process.

You can setup ONE-TIME or RECURRING credit card payments by visiting:
www.littleelm.org/1379/Online-Bill-Pay-Options

Access the online payment system 24 hours a day, seven days a week!
Online payments are processed immediately at no additional charge.

Mastercard, Visa, Discover, and debit cards are accepted for credit card payments.



You may also pay with cash, check, or money order in person at the Utility Billing Office located at 100 W. Eldorado Parkway.



CONTACT US:

Jason Shroyer, P.E.
Director of Public Works
jshroyer@littleelm.org

Cody Collier
Assistant Director of
Public Works
ccollier@littleelm.org

Tim Walker
Utilities Manager
twalker@littleelm.org

Michelle Kuzov
Streets, Stormwater, Solid
Waste Manager
mkuzov@littleelm.org

Chris Wright
Fleet Maintenance
Manager
cwright@littleelm.org

Jenny Glinka
Senior Administrative
Assistant
jglinka@littleelm.org

Town of Little Elm

Public Works Department

1600 Mark Tree Lane
Little Elm, TX 75068

Phone: 972-377-5556

Fax: 214-618-8278

PublicWorksInfo@littleelm.org

Hours of Operation:
Monday - Friday
7 a.m. - 3:30 p.m.

